

BOROUGH COUNCIL OF KING'S LYNN & WEST NORFOLK

CORPORATE PERFORMANCE PANEL

Minutes from the Meeting of the Corporate Performance Panel held on Monday, 20th February, 2017 at 6.00 pm in the Committee Suite, King's Court, Chapel Street, King's Lynn

PRESENT: Councillor G Wareham (Chairman)
Councillors B Ayres, P Beal, J Collop, G Hipperson, J Moriarty (substitute),
A Morrison, D Pope (substitute) and D Tyler

Portfolio Holder:

Councillor Mrs Nockolds, Culture, Heritage and Health

Observing:

Councillors I Devereux, B Long and P Kunes

By Invitation:

Councillor C Joyce

Under Standing Order 34:

Councillor P Rochford for CP80

Officers:

Debbie Gates, Executive Director Head of Central & Community Services

Lorraine Gore, Assistant Director

Becky Box, Policy, Performance and Personnel Manager

Those present held a minutes' silence for the late Councillor Ian Gourlay

CP74 **APOLOGIES**

Apologies for absence were received from Councillors R Bird, N Daubney, Lord Howard.

CP75 **MINUTES**

The minutes from the Corporate Performance Panel held on 19 December 2016 were agreed as a correct record and signed by the Chairman.

CP76 **DECLARATIONS OF INTEREST**

Councillor B Long declared a non-pecuniary interest as he was a Trustee of Marshland St James and District Community and Sports Centre for which he received no remuneration. Councillor Long advised that he was observing the Panel meeting only.

CP77 URGENT BUSINESS UNDER STANDING ORDER 7

To consider passing the following resolution:

That under Section 100(a)(4) of the Local Government Act 1972, the press and public be excluded from the meeting for the following item of business on the grounds that it involves the likely disclosure of exempt information as defined in paragraph 3 of Part 1 of Schedule 12A to the Act.

**Exempt Report: Cabinet Members Delegated Decision:
Temporary Loan to support Marshland St James and District
Sports and Community Centre Project**

The Chairman explained that the above item had been called in. However, the Chief Executive was unable to up hold the call in request, but had asked that this decision taken be added as a late item to the agenda for consideration and discussion.

The Chairman invited Councillor Joyce to ask any questions/or to raise any points which required clarification.

The Portfolio Holder, Culture, Heritage and Health and the Assistant Director responded to questions from Councillor Joyce and the Panel relating to:

- The Equality Impact Assessment.
- Value of asset secured against the loan.
- Professional fees.
- Interest rate of the loan.
- Loans to other similar organisations.
- Borough Council's return on loan.
- Other community projects being made aware of applying for a loan from the Borough Council.

Councillor Pope wished it to be recorded that the Chairman, Councillor Wareham refused his request to speak.

RETURNED TO OPEN SESSION

CP78 MEMBERS PRESENT PURSUANT TO STANDING ORDER 34

Councillor P Rochford for Item 7 Improving Attainment in West Norfolk.

CP79 CHAIRMAN'S CORRESPONDENCE (IF ANY)

None.

CP80 **IMPROVING ATTAINMENT IN WEST NORFOLK**

Under Standing Order 34, Councillor Rochford was present for this item.

The Panel received a presentation from Neil Groves, Adviser from the Education Achievement Services at Norfolk County Council and Becky Box – Policy, Performance and Personnel Services Manager (copies of which is attached to the minutes).

The Panel were invited to ask questions/comments, a summary of which is set out below.

- Progress 8 – assessment of pupils - systems/grades/qualifications changing from letters (8 Levels) to numbers (9 levels) which would allow the top performing pupils to be differentiated.
- Complexity of measuring test results/efforts put into teaching pupils.
- Curriculum offer – relevant performance measures to enable pupils to pass tests/cope with life balances regardless of ability.
- West Norfolk/Norfolk/National comparison of results.
- Accountability in schools/how schools compared with similar sized schools both in Norfolk and nationally.
- Transition of primary or secondary school into an Academy.
- Multi Agency Academy – a network established to enable sharing of best practice.
- Visits to Asian countries to study methods of education. An example was given of a visit to Shanghai to observe the teaching methods for maths.
- Specific smaller scale projects undertaken to assist schools achieving their outcomes, examples given of projects at Heacham Junior, Tilney St Lawrence, West Walton, Terrington St John, Walpole Highway and the recent Uni Challenge. It was explained that all projects were monitored and evaluated to look at how the identified projects had made an improvement.
- Primary Head Teachers Network.
- Potential crisis in West Norfolk – lack of skills/aspirations in West Norfolk.
- Transition of pupils from Primary to Secondary school.
- Key Stage 2 pupils being 4% below the national average.
- Outcomes for schools - % secondary phase schools judged good or better
- Ofsted inspection regime.
- Range of mental health issues in schools.
- 16 – 18 year olds in West Norfolk below Norfolk and National average.
- How the Borough Council measured projects/impact on local attainment.

The Panel commented that they would like to seek more detailed information on mental health issues in schools in the next annual update report in 2018.

RESOLVED: The Panel would continue to receive an annual update report.

CP81 **PANEL WORK PROGRAMMES 2016/2017 AND 2017/2018**

The Panel noted with Work Programmes for 2016/2017 and 2017/2018.

CP82 **DATE OF NEXT MEETING**

The next meeting of the Corporate Performance Panel will be held on Tuesday 21 March 2017.

The meeting closed at 7.48 pm



Improving Attainment in West Norfolk

Becky Box,
Policy, Performance and Personnel Manager



Context

In West Norfolk there are:

- 70 primary schools – for approx. 11,000 pupils
- 8 secondary schools – for approx. 9,500 students
- The College of West Anglia

(source ONS mid 2013)



Background

- Active interest in educational attainment for around 6 years
- Co-ordinate the 'Improving Attainment Steering Group'
- Remains one of our corporate priorities
- Very 'West Norfolk' focused
- Funded via second homes money



Previous Initiatives

- Research and developing a cohesive approach to tackling attainment
- Establishment of the Steering Group, priority issues:
 - Best practice and leadership development (e.g. middle & senior leaders, visits, coaching & mentoring)
 - Raising aspirations/knowledge of options
 - 'Achievement for all' project (£100k funding)
- General focus on Secondary schools



Current Focus – 2016/17

- Engagement with a wider range of schools (including primaries)
- Attainment in Maths and English
- Small projects which target specific areas of need, linked to identified priorities
- Support for mental health related initiatives
- Transition



Performance Data

Neil Groves

Adviser, Education Achievement Service,
Norfolk County Council

876



Achievements in 2016/17

- Establishment of a primary heads network
- Support for a range of small projects which have delivered real improvement in schools
- Supported schools to develop a response to mental health issues
- WN University Challenge conference and mock GCSE's



Examples – Our Norfolk Adventure

Heacham Juniors

- <https://www.youtube.com/watch?v=le8g2K6EqZM>



Example 2 – The Windmill Warbler



Happy Birthday Ma'am

Archie (TSL) and Thomas (WW)

Friday the 10th June was the Queen's official 90th birthday. To celebrate, The Windmill Primary Federation held street parties – to mark the occasion.

At Walpole Highway, the dining room was set up with long tables and the hall was decorated with bunting made by the children. At the start of lunch, the children sang the National Anthem. Following this, the children enjoyed an afternoon of regal activities, including a bouncy Windsor Castle!

At the West Walton street party, the weather was glorious. Food was provided by the School Association for the whole community to enjoy. The

children got into the spirit by painting their faces and wearing crowns. At the end of the afternoon, in honour of Her Majesty, the children sang the National Anthem.

At Terrington St John, one big table was set up in the playground for the children to eat at. The playground was decorated with bunting and the children enjoyed playing with their friends. Following this, the children sang the National Anthem before bowing or curtsying to Princess Pursglove.

At Tilney St Lawrence, tables were set up on the field; there was lots of different food to enjoy, including cucumber sandwiches and cupcakes topped with royal icing. All of the children had a fantastic time and they are already looking forward to celebrating the Queen's 100th Birthday.



Example 3 – Changing Attitudes to Maths

Heacham Infant & Nursery School

‘Pupils ‘mathematical skills have improved further as a result of the work focussed on the new curriculum and involved maths diaries and workshops for parents and staff. Standards remain above the national average for reading, writing and mathematics at the end of year 2.’

Ofsted 2016



Mental Health Project

In an average class of 30 15 year old pupils:

- 3 could have a mental illness
- 10 are likely to have witnessed their parents separate
- 1 could have experienced the death of a parent
- 7 are likely to have been bullied
- 6 may be self harming

Public Health England, 2015



Mental Health Project

- September 2015 – Ofsted inspection framework revised to include judgement on ‘personal development, behaviour and welfare’
- January 2016, Department of Education: Every school should have a teacher trained in Mental Health First Aid to ensure that teachers and support staff are aware of the issues and have the knowledge, skills and support to address mental health issues in their pupils.



Mental Health Project

- ‘Mental Health First Aid Light’ courses
- ‘Mental Health in Young People’ courses
- Analysing feedback from training
- Supporting small projects within specific schools



University Challenge - Conference



884



Looking Forward to 2017/18

- Projects which support Maths and English
- Development of mental health project
- Support for transition
- Targeted projects to support areas of need identified by schools (individually or collectively)



Closing Remarks

- Education is not our statutory duty – but we have a responsibility for young people in West Norfolk
- Educational attainment will help secure the long term economic future of the borough
- Very unusual – in fact unheard of! – for a district Council to participate in education in this way



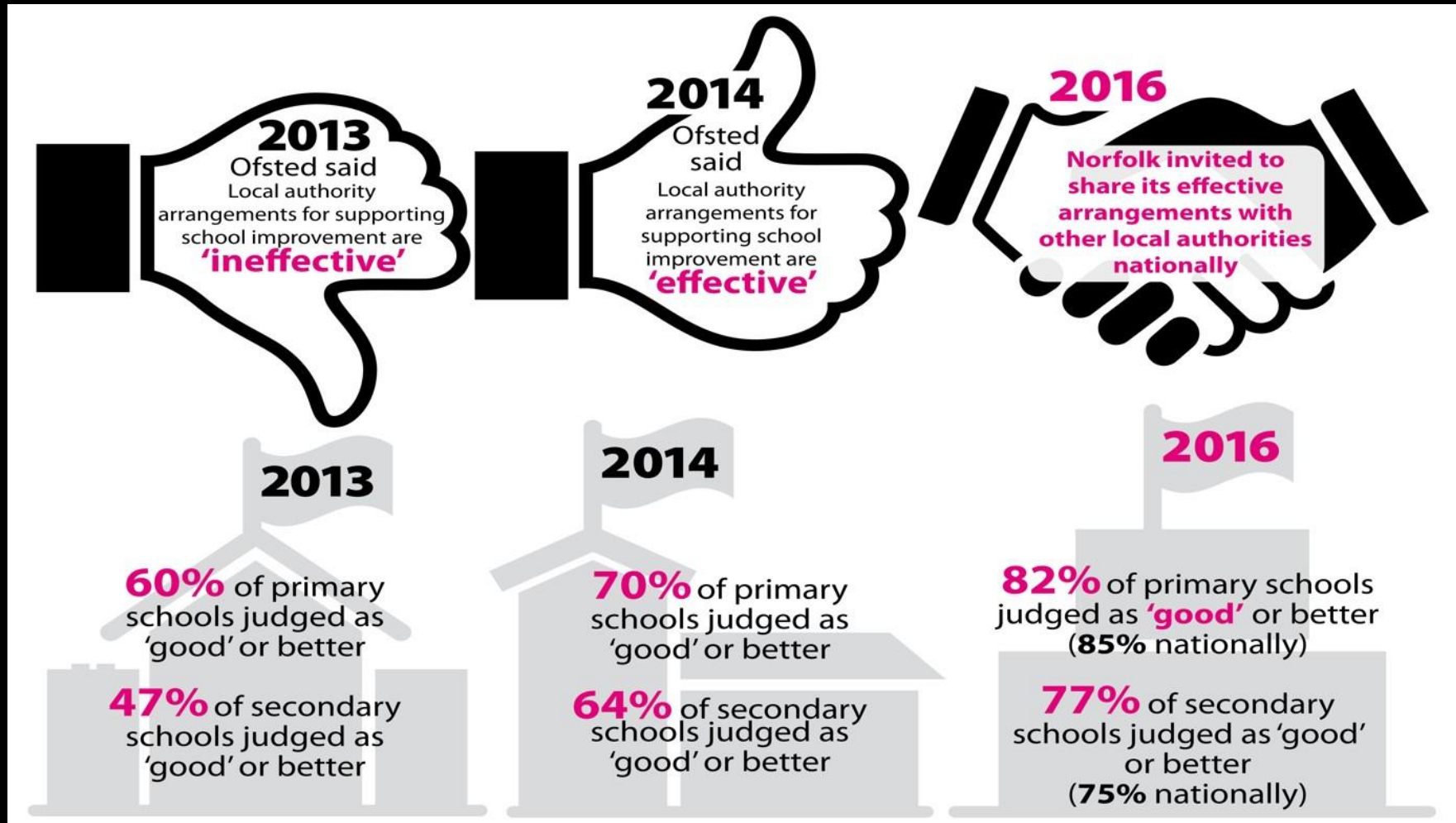
- Opportunity to ask questions.....



EDUCATION ACHIEVEMENT SERVICE

Neil Groves

OUTCOMES FOR SCHOOLS



OUTCOMES FOR SCHOOLS

	Latest Norfolk	KL & West	Latest National
% Schools judged Good or Outstanding	89%	88%	89%
% Primary phase schools judged good or better	90%	90%	91%
% Secondary phase schools judged good or better	84%	60%	79%
% Special schools judged good or better	91%	100%	94%

OUTCOMES FOR PUPILS — THE HEADLINES

EYFS outcomes — in line with national averages

Key Stage 2 — closing the gap — but below the national average

Key Stage 4 — above the national for Progress 8

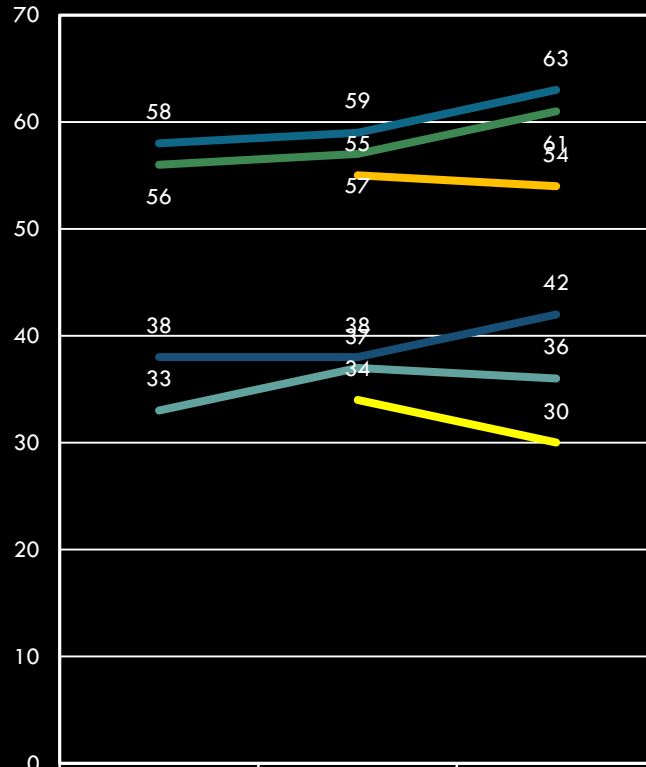


PROGRESS 8 EXPLAINED

KEY STAGE 4

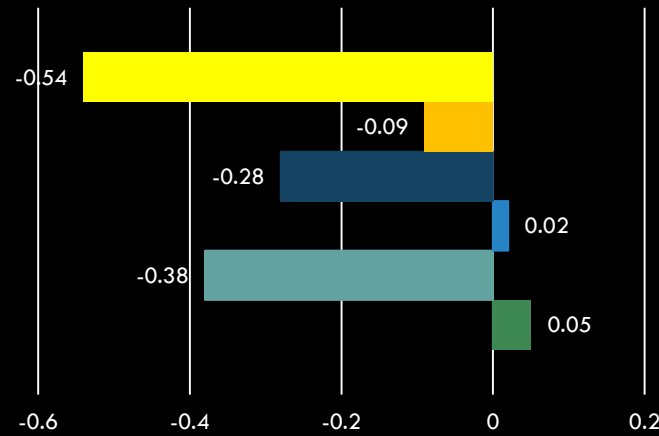
- Norfolk
- National
- KL & West
- Nfk Disadvantaged
- Nat Disadvantaged
- KL & West DisAdv

GCSE % C+ English and Mathematics

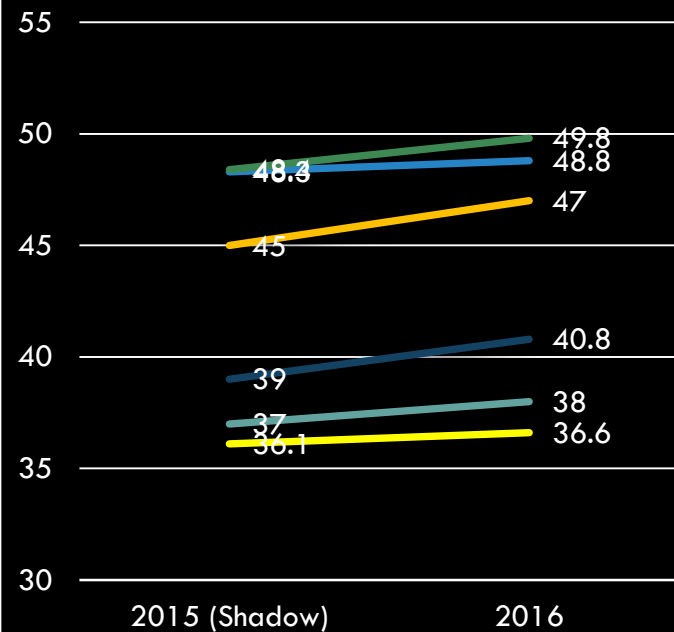


	2014	2015	2016
Norfolk	56	57	61
Nfk Disadvantaged	33	37	36
National	58	59	63
Nat Disadvantaged	38	38	42
KL & West	55	55	54
KL & West DisAdv	34	34	30

Progress 8

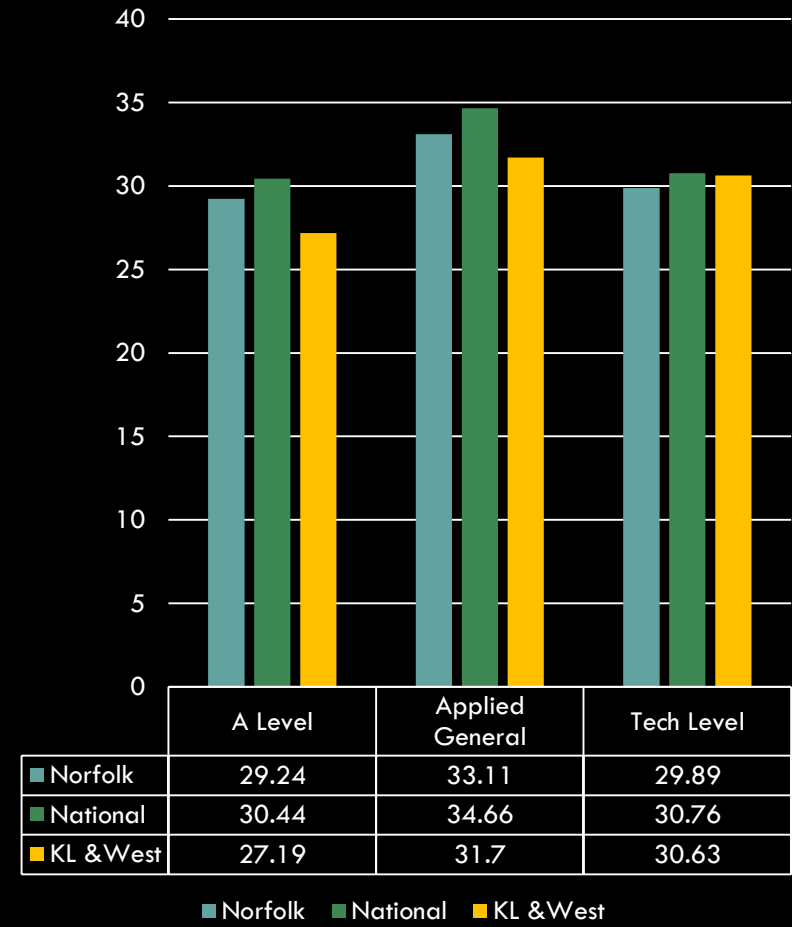


Attainment 8



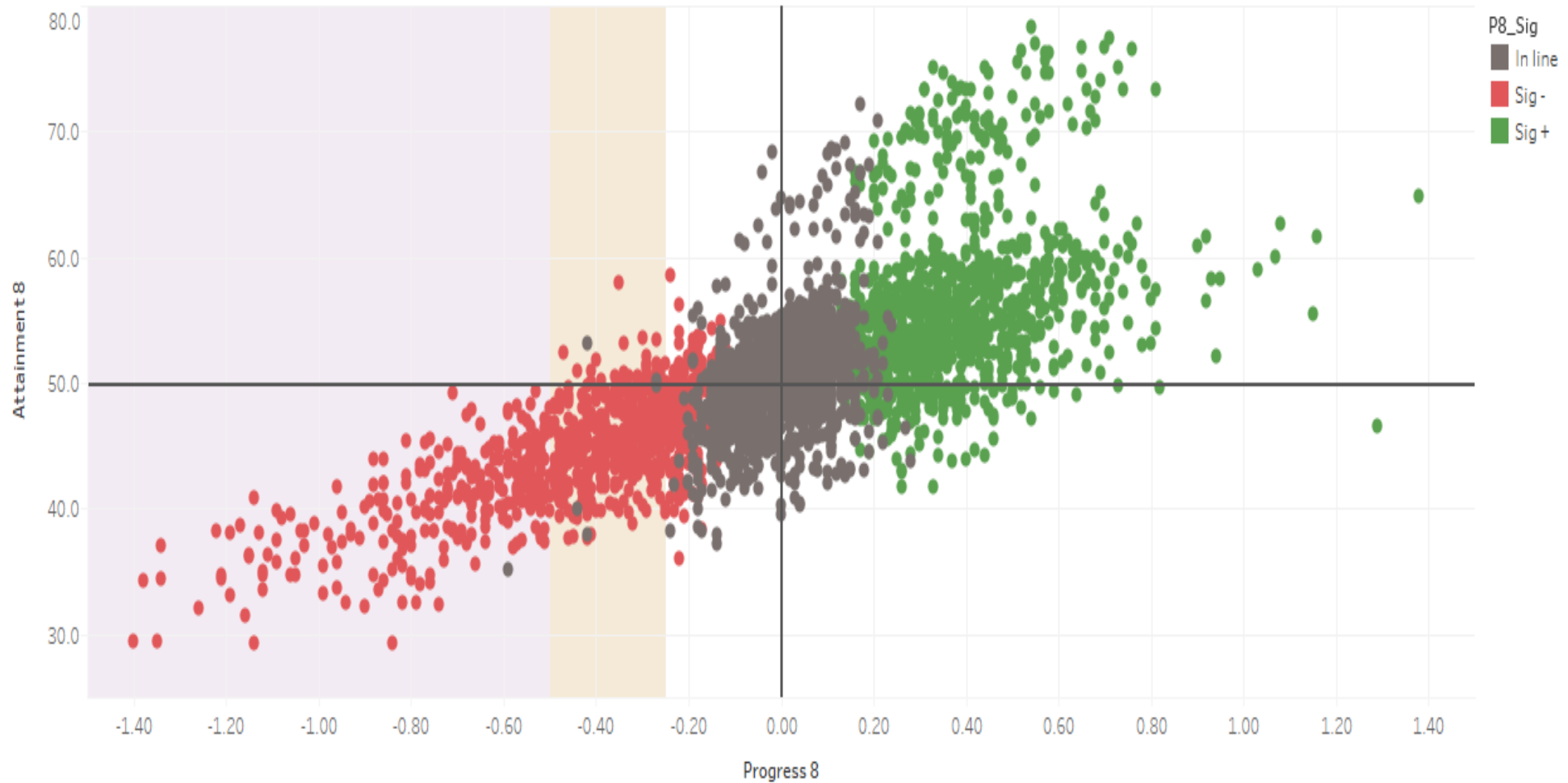
Post 16

16 – 18 Level 3 Average Points Per Entry



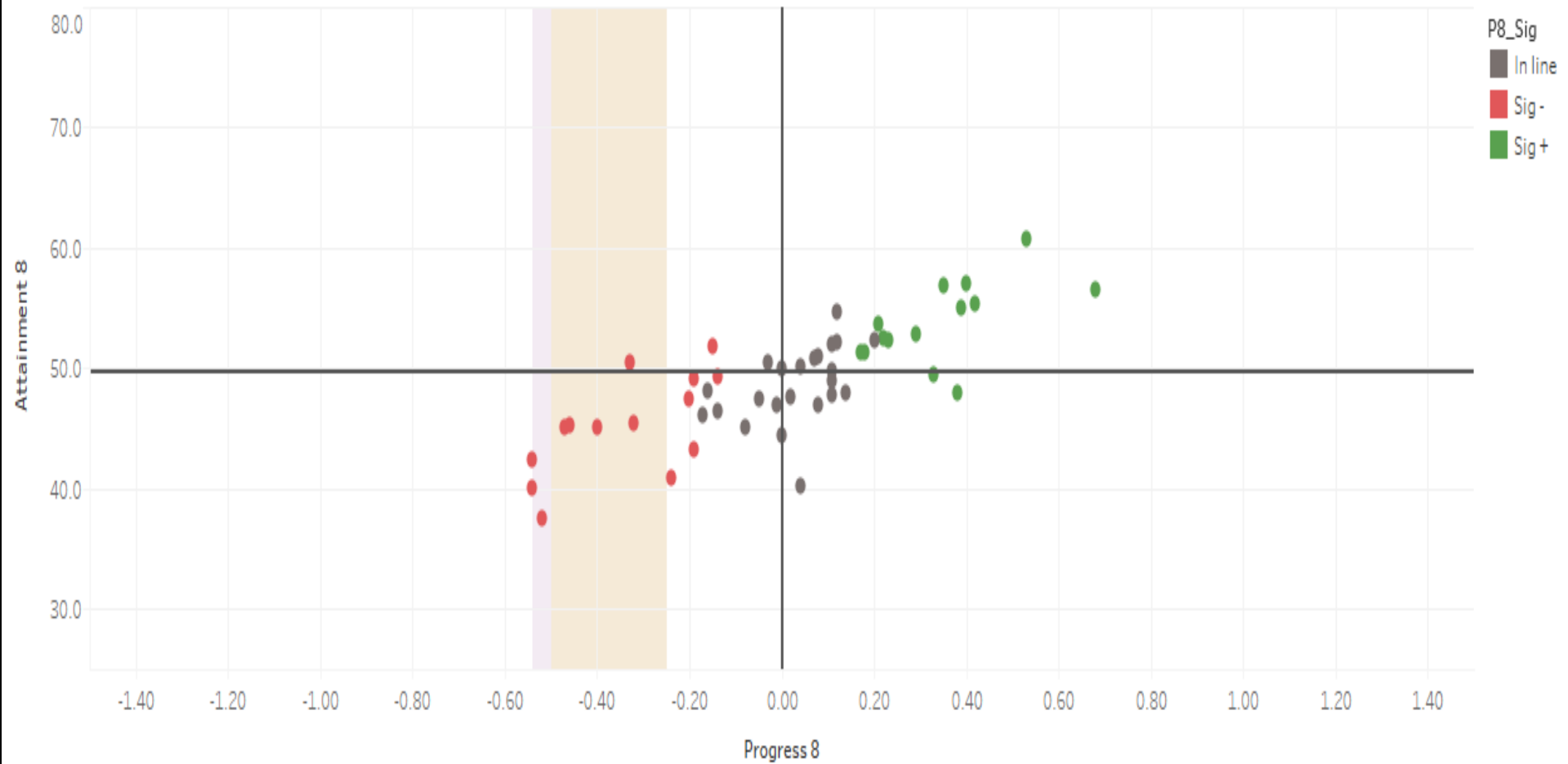
NATIONAL

Scatterplot



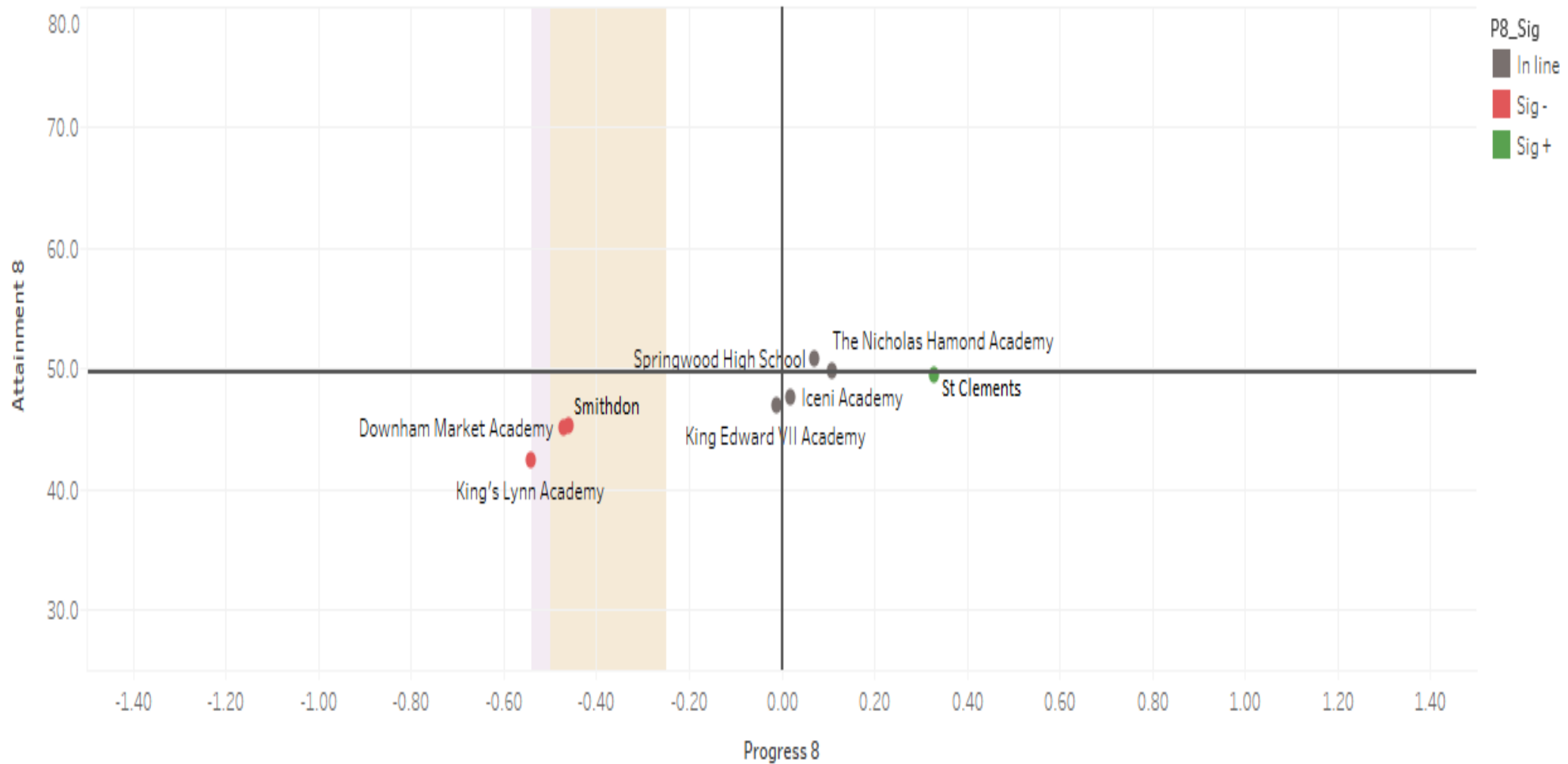
NORFOLK

Scatterplot



KL & WEST

Scatterplot



SECONDARY VIEW

DFE	School Name	Headteacher	VA/P8	VA/P8 DisAdv	P8 Groups					P8 Buckets				BASICS	BASICS DisAdv	EBACC Entry	EBACC Ach	APS/A8	APS/A8 DisAdv	Attendance	PA
					2016 P8 - EHCP/St	2016 P8 - SEN Supp	2016 P8 - Low PA	2016 P8 - Mid PA	2016 P8 - High PA	P8 English	P8 Maths	P8 Ebacc	P8 Open								
4001	Downham Market Academy	Mr Phil Hearne																			
6911	Iceni Academy	Ms Gee Cook																			
4016	King Edward VII Academy	Mr Craig Morrison																			
6909	King's Lynn Academy	Mr Craig Morrison																			
4023	Marshland High School	Mrs Elizabeth Dormor																			
4026	Smithdon High School	Mr Paul Marsh																			
4081	Springwood High School	Mr Andrew Johnson																			
4012	St. Clement's High School (Academy)	Mr Nigel Willingham																			

KEY STAGE 4

Planned NSEL Raising Achievement Group meeting cancelled this term

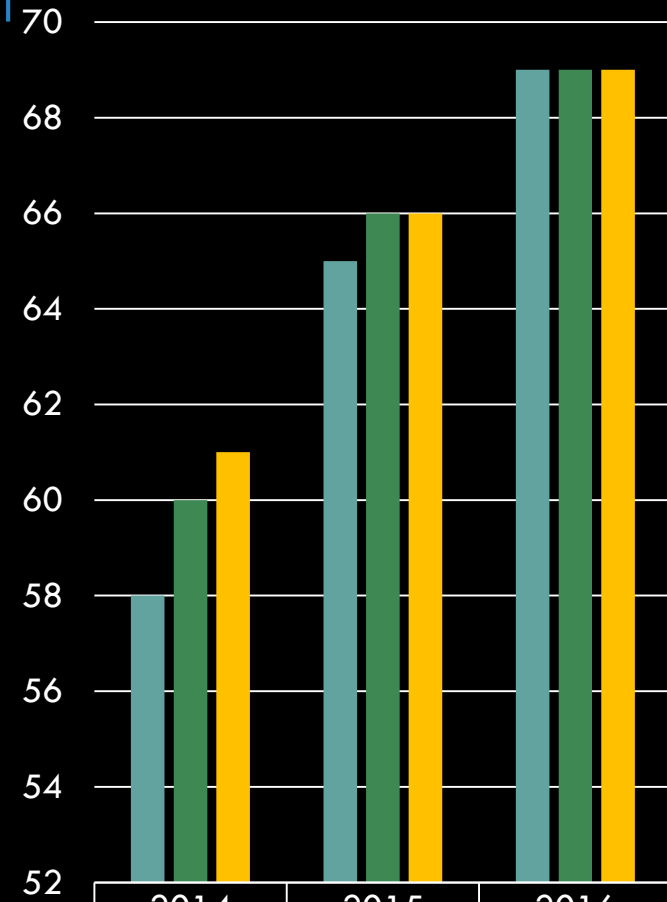
- Focus on Data Sharing project

Could link in with similar projects – Mathematics:

- Identify range of scores on each tier
- Supporting informed entry choices
- Question Level Data being used to inform curriculum and intervention

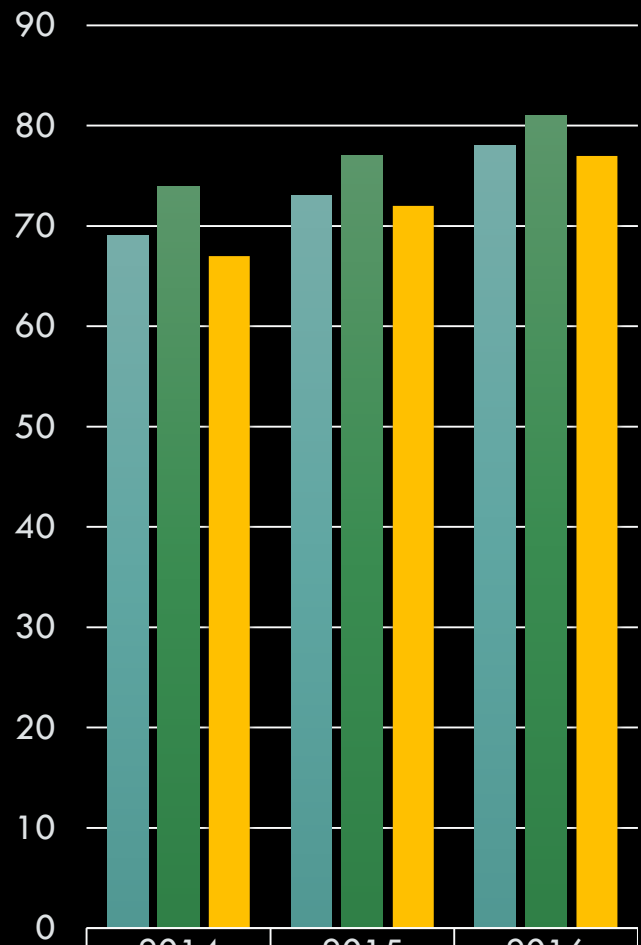
EARLY YEARS AND KEY STAGE 1

Early Years Good Level of Development



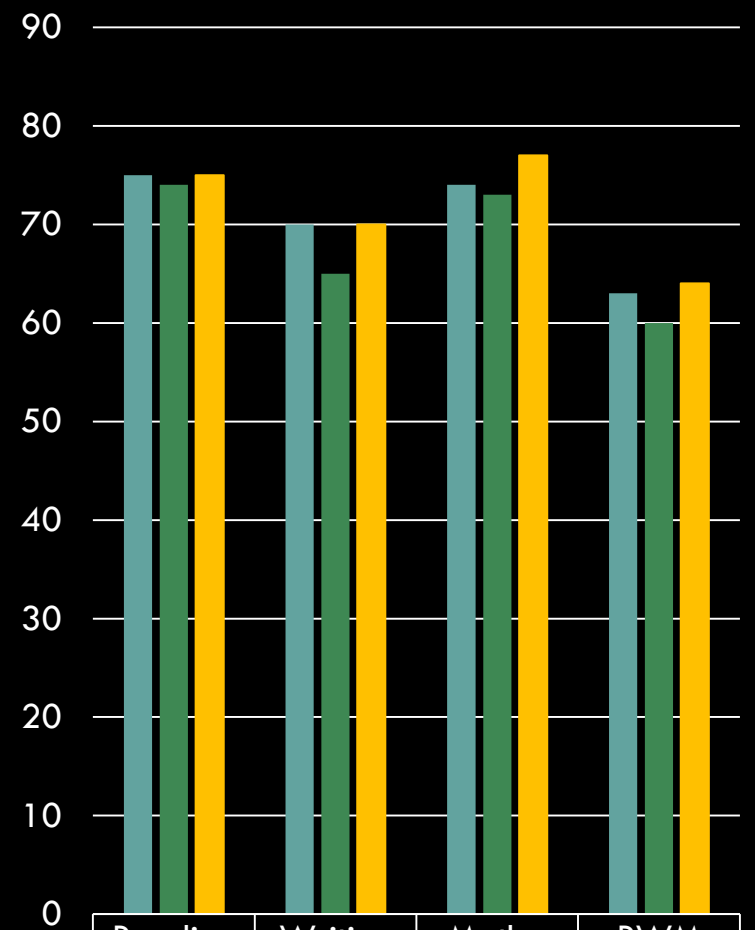
Norfolk	58	65	69
National	60	66	69
KL & West	61	66	69

Year 1 Phonics



Norfolk	69	73	78
National	74	77	81
KL & West	67	72	77

% Achieving the Expected Standard

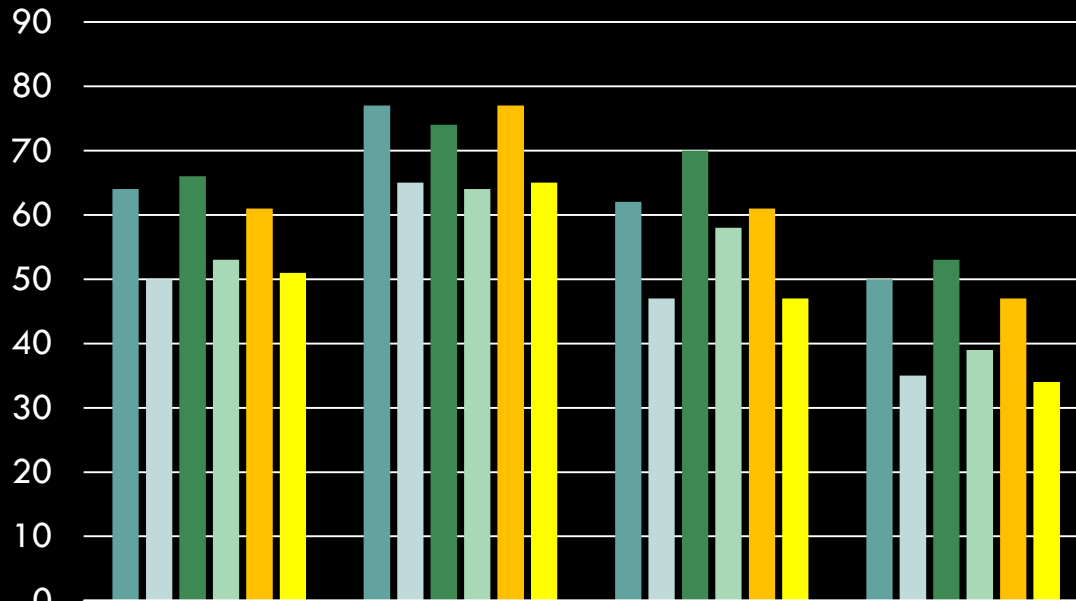


Norfolk	75	70	74	63
National	74	65	73	60
KL & West	75	70	77	64

PRIMARY PERFORMANCE MEASURES EXPLAINED

KEY STAGE 2

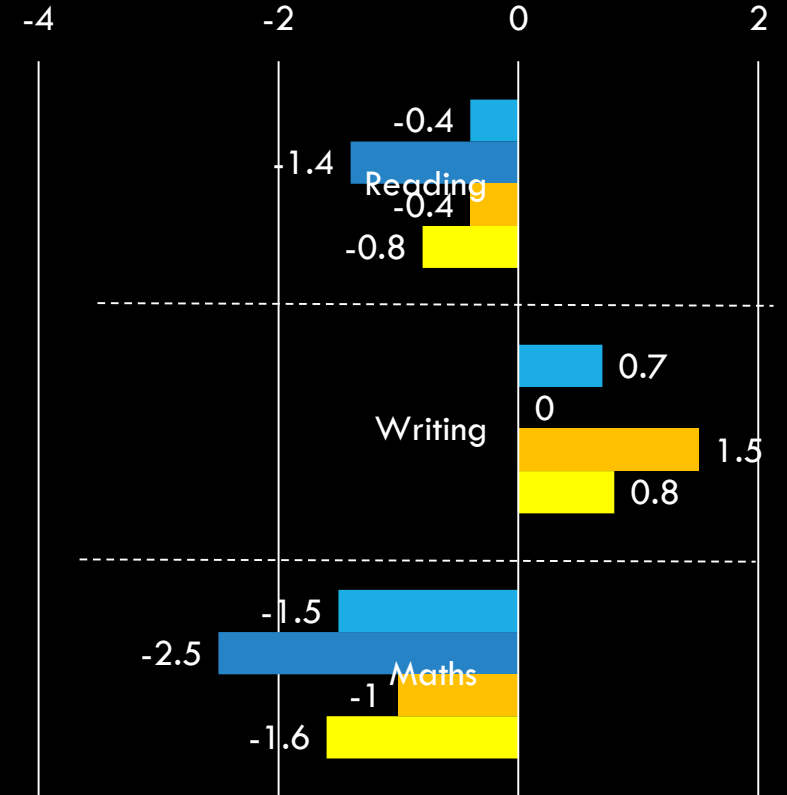
% Achieving the Expected Standard



	Reading	Writing	Maths	RWM
Norfolk	64	77	62	50
Nfk DisAdv	50	65	47	35
National	66	74	70	53
Nat DisAdv	53	64	58	39
KL & West	61	77	61	47
KL & W DisAdv	51	65	47	34

■ Norfolk ■ Nfk DisAdv ■ National ■ Nat DisAdv ■ KL & West ■ KL & W DisAdv

Average Progress KS1 - KS2



■ All Pupils ■ Nfk DisAdv
 ■ KL & West ■ KL & W DisAdv

KL & West is the best performing Norfolk district for progress in Reading and progress in Maths

KS2 MATHEMATICS QLA

Autumn term, using 2016 mathematics test

1126 pupil sample –

- targeted 30 schools – most engaged
- many others able to join

LARGEST NORFOLK - NATIONAL GAPS ARE ON PAPER 1 - ARITHMETIC

$$12 - 6.01$$

$$54 \times 23$$

$$3016 \div 13$$

$$95\% \text{ of } 240$$

$$234897 - 45996$$

$$17 \times 1\frac{1}{2}$$

$$20 - 4 \times 2$$

$$\frac{2}{5} \div 2$$

$$1\frac{1}{5} - \frac{1}{4}$$

$$\frac{3}{4} \div 2$$

- Pupils need quick mental fluency

LARGEST WITHIN SAMPLE VARIATION

Table – time / money difference (3 questions)

Algebra (2 questions)

$$3^2 + 10$$

2 digit multiplication

$$1320 \div 12$$

2 step reasoning money problem

$$725 \div 29$$

$$12456 - 11999 \text{ (4\% to 89\%)}$$

CHALLENGES

- ❑ Key Stage 2 outcomes – especially in mathematics
- ❑ Outcomes at primary & secondary for disadvantaged pupils
- ❑ Significant changes in accountability frameworks & qualifications at both KS2 & KS4
- ❑ Insufficient places for complex needs pupils – expansion in the medium term
- ❑ Rise in school exclusions / overspend on High Needs Block
- ❑ V11th form provision / Academisation
- ❑ EHCP completion
- ❑ Fragmentation of the ‘system’ – effective collaborations & transition

NO RELIABLE PREDICTIONS UNTIL 2022?

	2016	2017	2018	2019	2020	2021
Current Year Group	12	11	10	9	8	7
Point Scores	1-8	1-9				
GCSE Reform	None	English and Maths	EBacc + some popular GCSEs	Most	All	
KS2 Baseline	Old NC English / Maths	Old NC Reading / Maths				New NC Reading / Maths